

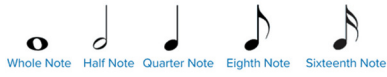
NOTE VALUES



REST VALUES



NOTE VALUES



REST VALUES



KEY SIGNATURES WITH SHARPS

A series of seven musical staves, each showing a key signature with a specific number of sharps. The staves are labeled from left to right: G Major (one sharp), D Major (two sharps), A Major (three sharps), E Major (four sharps), B Major (five sharps), F# Major (six sharps), and C# Major (seven sharps). To the left of the first staff, the letters A, B, C, D, E, F, G are listed vertically, corresponding to the notes on the staff.

G Major D Major A Major E Major B Major F# Major C# Major

KEY SIGNATURES WITH FLATS

A series of seven musical staves, each showing a key signature with a specific number of flats. The staves are labeled from left to right: F Major (one flat), Bb Major (two flats), Eb Major (three flats), Ab Major (four flats), Db Major (five flats), Gb Major (six flats), and Cb Major (seven flats). To the left of the first staff, the letters A, B, C, D, E, F, G are listed vertically, corresponding to the notes on the staff.

F Major Bb Major Eb Major Ab Major Db Major Gb Major Cb Major